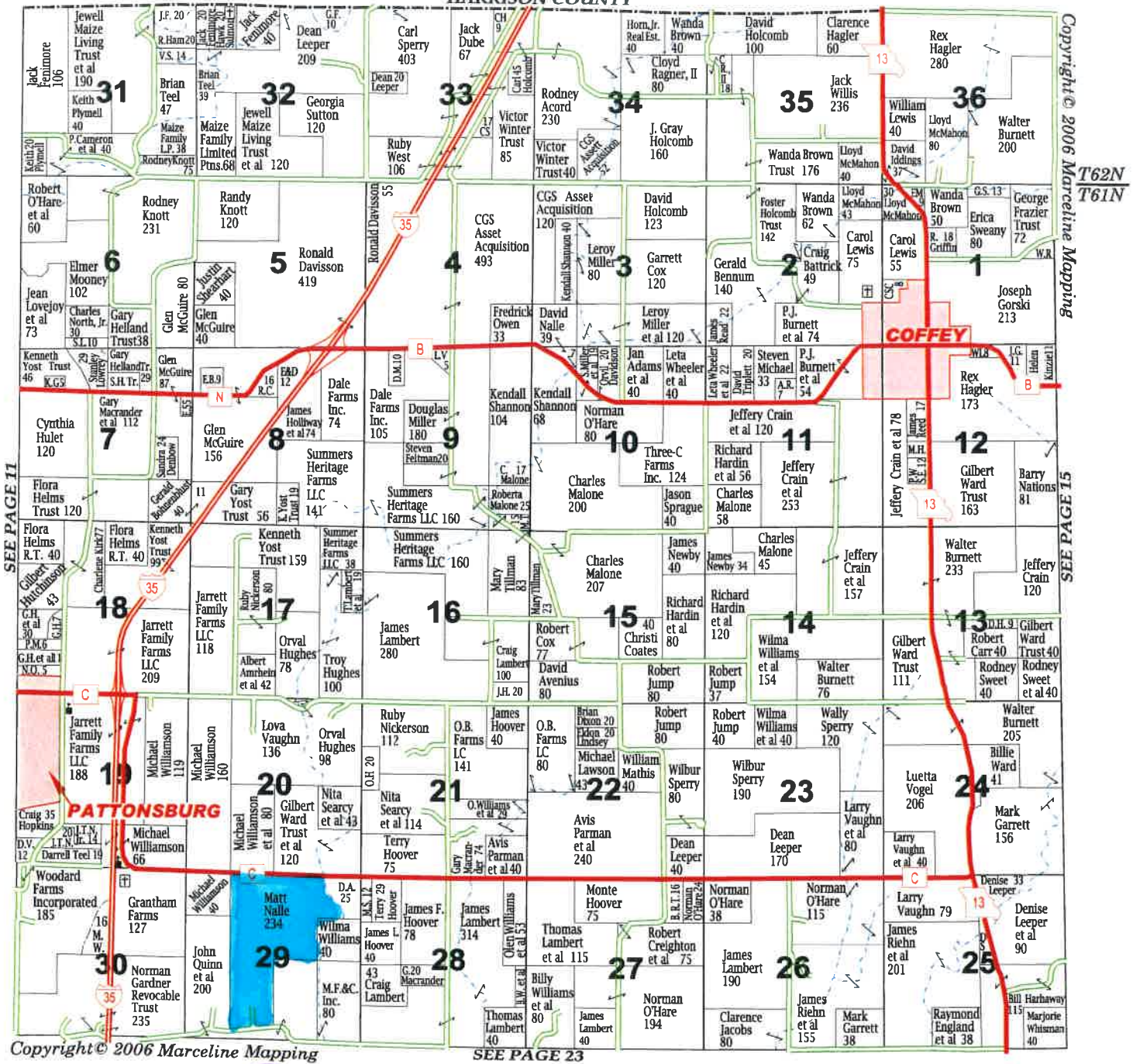


Farm 4

SALEM

T62-61N • R28W

HARRISON COUNTY



Copyright © 2006 Marceline Mapping

T62N
T61N

SEE PAGE 15

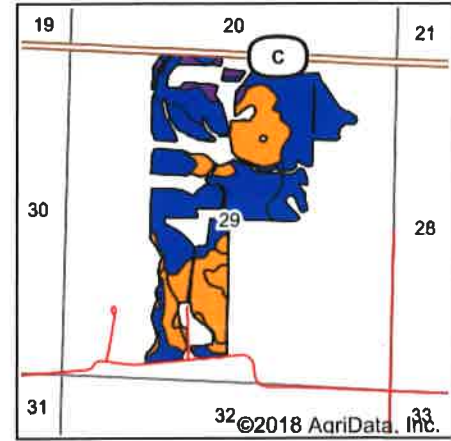
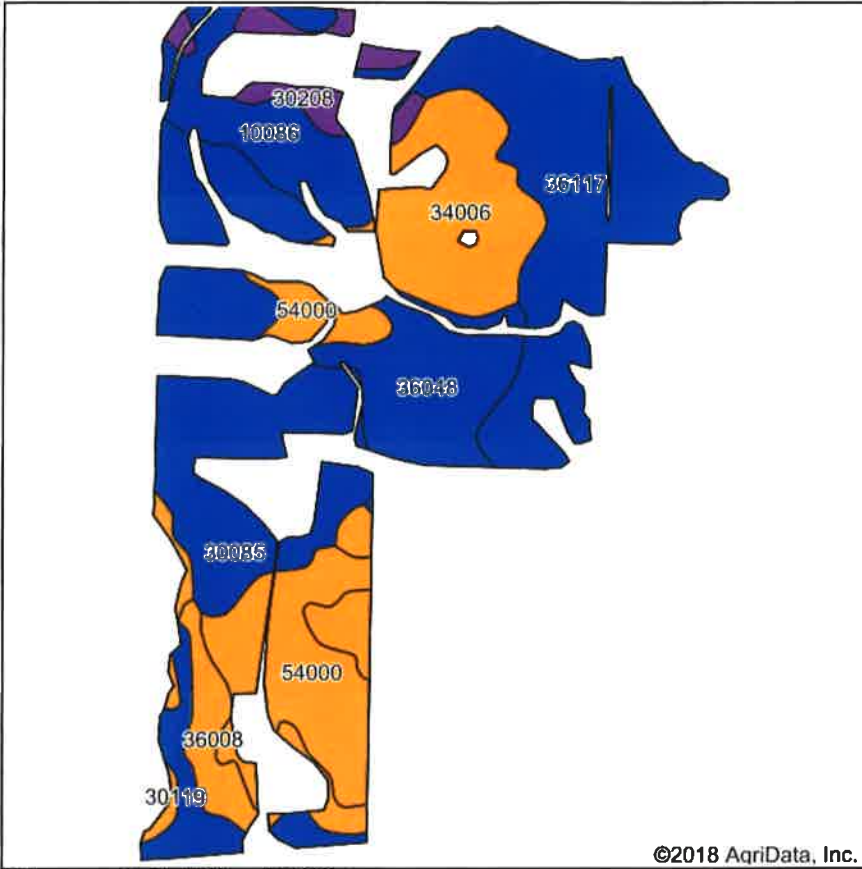
SEE PAGE 11

SEE PAGE 23

4

Farm 4

Soils Map



State: **Missouri**
 County: **Daviess**
 Location: **29-61N-28W**
 Township: **Salem**
 Acres: **175**
 Date: **5/13/2018**

United Country
 Property Solutions, LLC

Maps Provided By:
surety
 CUSTOMIZED ONLINE MAPPING
 © Agridata, Inc. 2018 www.AgrDataInc.com



Soils data provided by USDA and NRCS.

Area Symbol: MO061, Soil Area Version: 19

Code	Soil Description	Acres	Percent of field	Non-Irr Class Legend	Non-Irr Class *c	Alfalfa hay	Caucasian bluestem	Common bermudagrass	Orchardgrass red clover	Tall fescue	Warm season grasses
36117	Nodaway silt loam, heavy till, 0 to 2 percent slopes, occasionally flooded	39.33	22.5%		IIw						
30086	Grundy silt loam, 2 to 5 percent slopes	37.23	21.3%		Ile						
36048	Zook silt loam, 0 to 2 percent slopes, occasionally flooded	23.53	13.4%		IIw			8	7	8	9
54000	Chariton silt loam, 0 to 2 percent slopes, rarely flooded	22.32	12.8%		IIIw			7	7	7	8
34006	Gifford silt loam, 5 to 9 percent slopes	20.07	11.5%		IIIe						
10086	Mandeville silt loam, 2 to 5 percent slopes	13.88	7.9%		Ile	4	7	4	6	5	7
36008	Bremer silt loam, 0 to 2 percent slopes, rarely flooded	11.22	6.4%		IIw			8	7	8	8
30208	Vanmeter flaggy silty clay loam, 14 to 20 percent slopes	5.45	3.1%		VIIe	4	7	4	6	5	7
30119	Lagonda silty clay loam, 2 to 5 percent slopes, eroded	1.97	1.1%		IIIe	5	8	7	8	7	8
Weighted Average						0.5	0.9	3	3	3.1	3.6

*c: Using Capabilities Class Dominant Condition Aggregation Method

Soils data provided by USDA and NRCS.

Farm 4

Aerial Map



United
Country
Property
Solutions, LLC

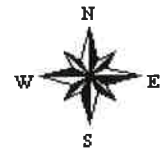
Maps Provided By:

CUSTOMIZED ONLINE MAPPING
© AgriData, Inc. 2018 www.AgriDataInc.com

map center: 40° 3' 15.63, -94° 4' 38.22

0ft 820ft 1640ft

29-61N-28W
Daviess County
Missouri



5/13/2018

Farm 4

MISSOURI
DAVISS
Form: FSA-156EZ



FARM : 4546
Prepared : Dec 27, 2017
Crop Year : 2018

Abbreviated 156 Farm Record

Tract 2122 Continued ...

NOTES

Tract Number : 5278

Description : E1 S29 T61 R28
BIA Unit Range Number :
HEL Status : HEL field on tract.Conservation system being actively applied
Wetland Status : Wetland determinations not complete
WL Violations : None
Owners :
Other Producers : None

Tract Land Data

Farm Land	Cropland	DCP Cropland	WBP	WRP	CRP	GRP	Sugarcane
241.58	218.90	218.90	0.00	0.00	0.00	0.00	0.00
State Conservation	Other Conservation	Effective DCP Cropland	Double Cropped	MPL	EWP	DCP Ag. Related Activity	
0.00	0.00	218.90	0.00	0.00	0.00	0.00	

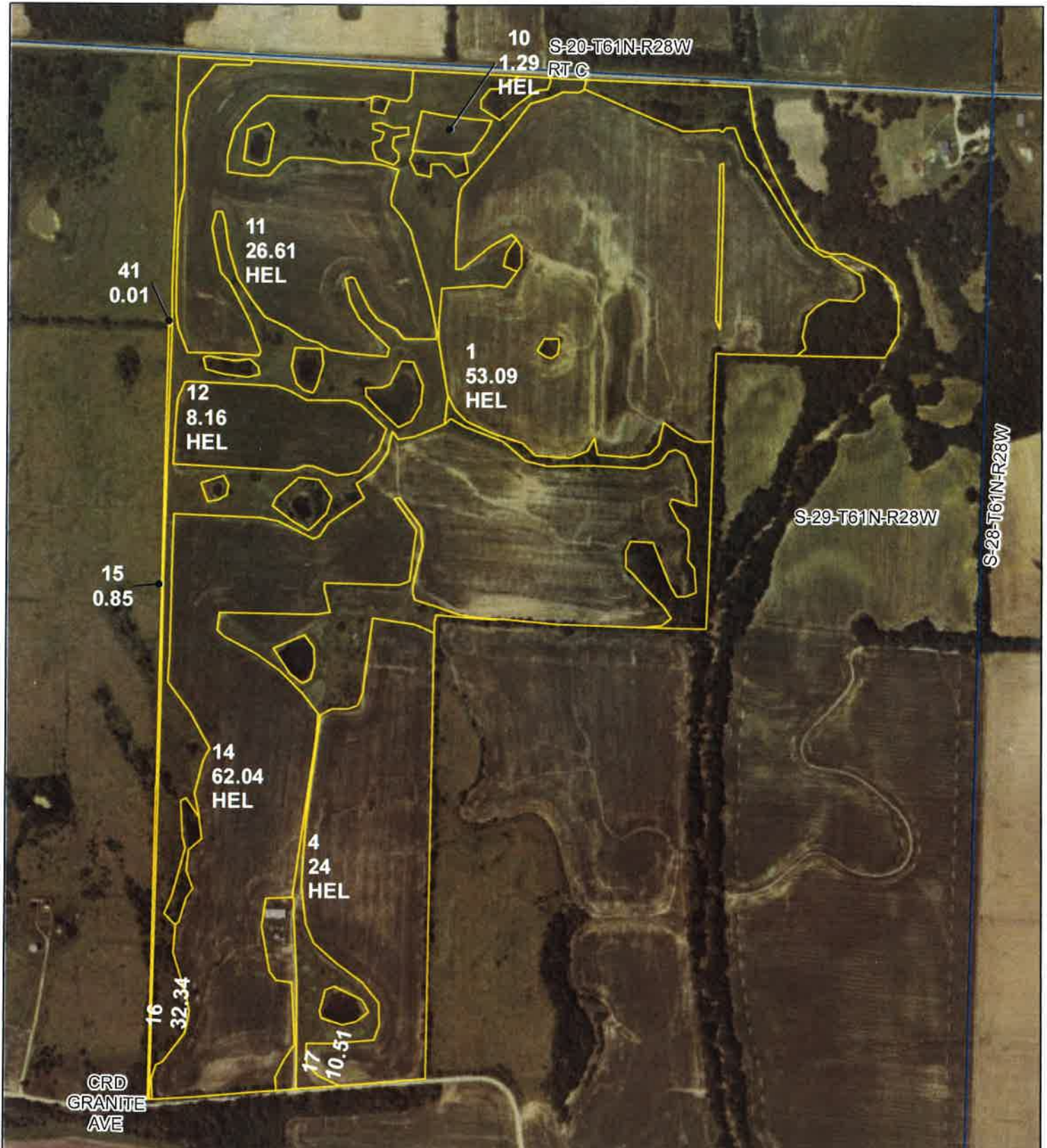
DCP Crop Data

Crop Name	Base Acres	CCC-505 CRP Reduction Acres	CTAP Yield	PLC Yield
Corn	96.07	0.00	0	114
Soybeans	33.68	0.00	0	41
TOTAL	129.75	0.00		

NOTES

The U.S. Department of Agriculture (USDA) prohibits discrimination against its customers, employees, and applicants for employment on the basis of race, color, national origin, age, disability, sex, gender identity, religion, reprisal, and where applicable, political beliefs, marital status, familial or parental status, sexual orientation, or all or part of an individual's income is derived from any public assistance program, or protected genetic information in employment or in any program or activity conducted or funded by the Department. (Not all prohibited bases will apply to all programs and/or employment activities.) Persons with disabilities, who wish to file a program complaint, write to the address below or if you require alternative means of communication for program information (e.g., Braille, large print, audiotape, etc.) please contact USDA's TARGET Center at (202) 720-2600 (voice and TDD). Individuals who are deaf, hard of hearing, or have speech disabilities and wish to file either an EEO or program complaint, please contact USDA through the Federal Relay Service at (800) 877-8339 or (800) 845-6136 (in Spanish).

If you wish to file a Civil Rights program complaint of discrimination, complete the USDA Program Discrimination Complaint Form, found online at http://www.ascr.usda.gov/complaint_filing_cust.html, or at any USDA office, or call (866) 632-9992 to request the form. You may also write a letter containing all of the information requested in the form. Send your completed complaint form or letter by mail to U.S. Department of Agriculture, Director, Office of Adjudication, 1400 Independence Avenue, S.W., Washington, D.C. 20250-9410, by fax (202) 690-7442 or email at program.intake@usda.gov. USDA is an equal opportunity provider and employer.



All Measurements are For FSA Programs Only

Wetland Determination Identifiers

- Restricted Use
- ▼ Limited Restrictions
- Exempt from Conservation Compliance Provisions

Disclaimer: Wetland identifiers do not represent the size, shape or specific determination of the area. Refer to your original determination (CPA-026 and attached maps) for exact wetland boundaries and determinations, or contact NRCS.

Daviess Co. FSA

C=Com-Yel-GR; SB=Soybn-Com-GR;
 HRW=Wheat-HRW-GR; SRW=Wheat-SRW-GR;
 Milo=Sorgh-GRS-GR;
 H=MIXFG-IGS-FG; P=MIXFG-IGS-GZ
 Alf=Alfalfa-FG; LS=MIXFG-IGS-LS
 All fields are Non Irrigated
 For other Crops include-Crop-Type-Use

1:7,340

Program Year: 2018
 Created: 11/16/2017
 Flown: 2014-07-04

- clu
- crp
- plss

Farm 4546
Tract 5278

