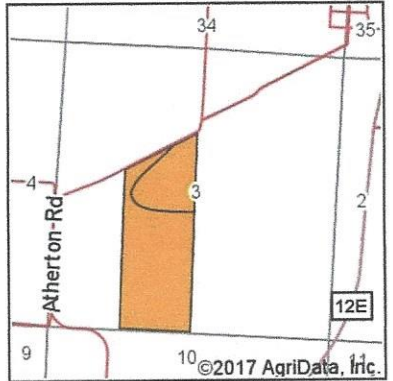
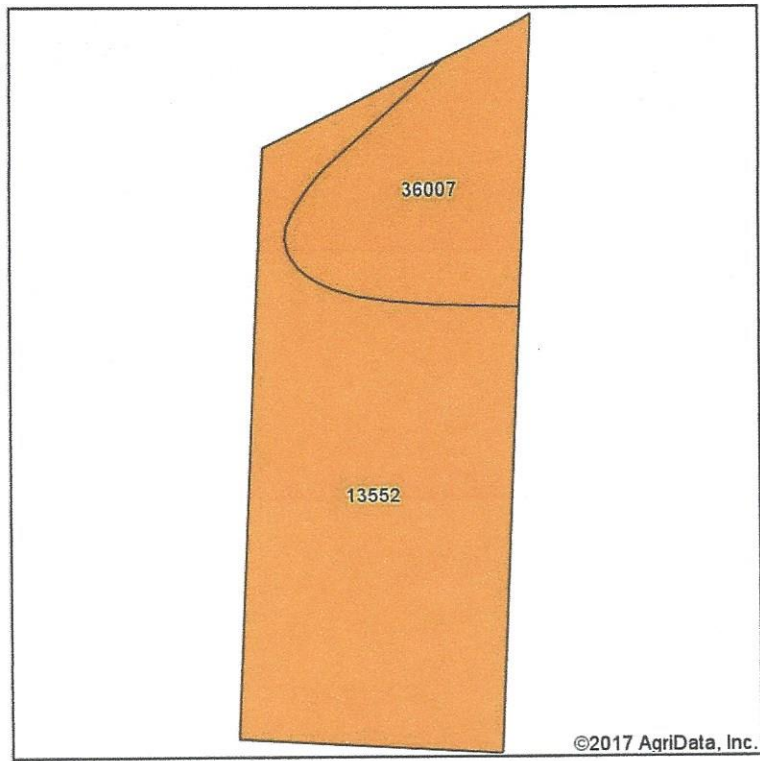


Soils Map



State: **Missouri**
 County: **Jackson**
 Location: **3-50N-31W**
 Township: **Blue**
 Acres: **101.57**
 Date: **7/24/2017**

United Country
 Property Solutions, LLC

Maps Provided By
surety
 CUSTOMIZED ONLINE MAPPING
 © AgriData, Inc. 2017 www.AgriDataInc.com



Soils data provided by USDA and NRCS.

Area Symbol: MO095, Soil Area Version: 17

Code	Soil Description	Acres	Percent of field	Non-Irr Class Legend	Non-Irr Class *c	Common bermudagrass	Orchardgrass red clover	Tall fescue	Warm season grasses
13552	Modale silt loam, 0 to 2 percent slopes, occasionally flooded	74.58	73.4%		Illw	7	9	8	10
36007	Bremer silt loam, 0 to 2 percent slopes, occasionally flooded	26.99	26.6%		Illw	8	7	8	9
Weighted Average						7.3	8.5	8	9.7

*c: Using Capabilities Class Dominant Condition Aggregation Method

Soils data provided by USDA and NRCS.